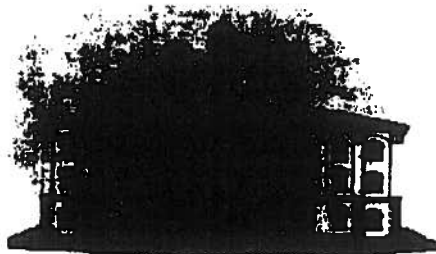


Thomas S. Henry
Chairman

Judy Kraft Mead

Ronald P. Williams



William Gaylord
Chief Clerk

Anthony P. Litwin, III
Solicitor

Commissioners of Wyoming County
1 Courthouse Square
Tunkhannock, PA 18657
(570) 996-2273
(570) 836-7244

February 25, 2015

Chairman Senator Gene Yaw of the Senate Resources and Energy Committee

Chairman Senator Scott Hutchinson of the Senate Local Government Committee

Wyoming county is a 7th class county which has been impacted by the gas industry. Even before the heavier drilling began here, we were affected by a housing shortage and traffic problem caused by the large influx of the gas industry in the adjoining Susquehanna and Bradford counties. The impact fee has been a definite help to our county and to our many small municipalities whose budgets just can't handle the effects especially the wear on their roads. Can you imagine heavy drilling rigs, construction equipment and water trucks continually traveling over two lane back country roads. Their budgets could never handle it without the impact fee to assist them.

We appreciate the wealth of natural energy under our county that can help our country become energy independent. Our goal is that it is extracted safely and with great regard for our environment. Large cities in Pennsylvania are benefiting from the low cost of gas with the proximity of the resource, but people have to understand that we at the moment have no natural gas available to our residents. However we have all the effects and impacts of obtaining the gas. We hope all understand what a benefit the impact fee has been to us. Here are just a few of the items we have used our money for:

- State of the art Computer Aided Dispatch system for 911
- GIS software
- Public Safety Training
- Information networks, servers, and security
- Match for Homeless Assistance Grant
- Match for Storm Water Management Grant
- Match for New County Comprehensive Plan
- Assistance with costs of having to board out prisoners
- Public Safety Training

Thank you for your attention and consideration.

Wyoming County Commissioners


Thomas S. Henry


Judy Kraft Mead


Ronald P. Williams